

Koroseal Interior Products

Traffic Patterns® Decorative Wall Protection



Urban Wave 69001
TP-69001



Terrace Agra
TP-F721-07



Orleans Culinary Arts
TP-R921-46



Isis Veil
TP-6921-81



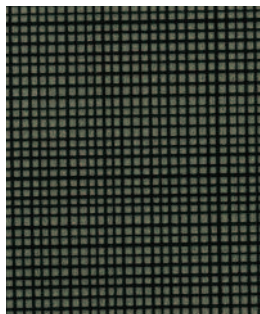
Abyss 69081
TP-69081



Pentimento Viviano
TP-4P21-96



Pulse Alternator
TP-7521-92



Delineate Mirror Image
TP-D821-96



Poseidon Gambia
TP-Z521-49



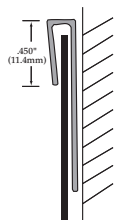
Malay Bermuda
TP-LY28-71

Traffic Patterns® Decorative Wall Protection is “the answer.” Providing durable wall protection with aesthetic appeal, **Traffic Patterns** offers the attractiveness and variety of **Koroseal®**, **Vicrtex®**, and **Koroseal® Studios** wallcoverings. **Traffic Patterns** is manufactured from woven (osnaburg), fabric-backed, and non-woven 21 oz. wall protection; custom weights up to 28 oz. are available. This unparalleled product can be specified in your choice **Koroseal**, **Vicrtex**, and **Koroseal Studios** wallcovering laminated over an impact-resistant base and capped with protective film. **Traffic Patterns** is designed for use in light- to medium-abuse areas subject to soiling, marring, and scuffing. The finished thickness for **Traffic Patterns** is .030" (0.76mm); custom thicknesses up to .060" (1.55mm) are available.

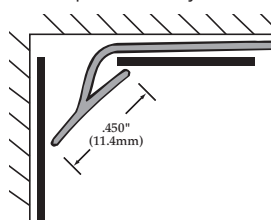
Traffic Patterns Decorative Wall Protection is chemical- and stain-resistant to prevent discoloration and surface damage from strong cleansing agents. All **Traffic Patterns** Decorative Wall Protection are fire rated for Surface Burning Characteristics and meet national building code standards.

Traffic Patterns wallcoverings are intended for use only in continuously temperature controlled environments.

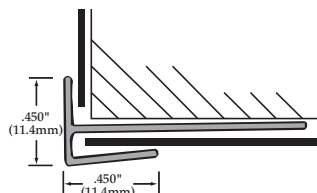
For more information on **Traffic Patterns**, please call your local **Koroseal** distributor at 800-628-0449.



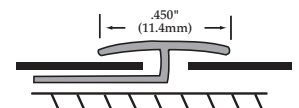
M082 J-Molding



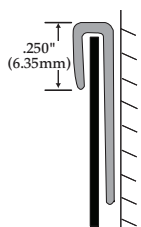
M083 Inside Corner



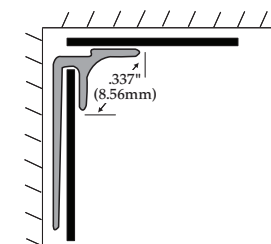
M085 Outside Corner



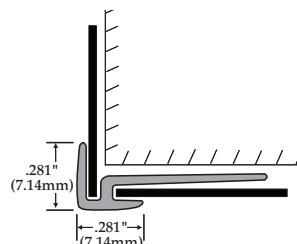
M087/M088 Divider Bar



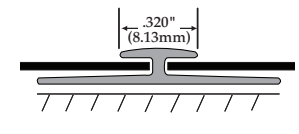
JC12 J-Molding*



IC12 Inside Corner*



OC12 Outside Corner*



DB12 Divider Bar*

*Aluminum molding options.

Traffic Patterns® Decorative Wall Protection

Product Guide Specification

SECTION 10 26 00 WALL PROTECTION

PART 1 GENERAL

1.01 SECTION INCLUDES

Decorative Wall Protection.

1.02 SUBMITTALS

- A. Comply with requirements of Section 01 33 00—Submittals.
- B. Product Data: Submit manufacturer's product data including installation instructions.
- C. Samples: Submit 8" (203mm) x 8" (203mm) sample of each pattern to be installed for Architect's approval.
- D. Certification: Submit manufacturer's certification indicating Decorative Wall Protection meets specified requirements.
- E. Maintenance Instructions: Submit manufacturer's maintenance instructions for Decorative Wall Protection.

1.03 QUALITY ASSURANCE

Installer Qualifications: Use installer experienced in the installation of Decorative Wall Protection on projects of similar size and complexity.

1.04 DELIVERY, STORAGE, AND HANDLING

- A. Delivery: Deliver materials to site in manufacturer's original, unopened containers and packaging, with labels clearly indicating manufacturer and material.
- B. Storage:
 1. Store materials indoors in a clean, dry area protected from damage and in accordance with manufacturer's instructions.
 2. Maintain storage temperature above 50°F (10°C).
 3. Store materials flat. Do not stand sheets on end.
- C. Handling: Protect materials during handling and installation to prevent damage.

1.05 ENVIRONMENTAL REQUIREMENTS

- A. Maintain constant minimum air temperature of 65°F (18°C) for a minimum of 48 hours before, during, and after installation.
- B. Maintain wall temperature between 65°F (18°C) and 85°F (29°C) during installation.
- C. Do not expose walls to direct sunlight during or after installation.
- D. Do not install if relative humidity is greater than 80%.
- E. Exposure to elevated humidity, temperatures over 80°F (27°C), direct sunlight or other radiant heat following installation may cause blistering, distortion, or delamination of material.

PART 2 PRODUCTS

2.01 MANUFACTURER

Korogard Wall Protection Systems,
A Division of Koroseal Interior Products, LLC

2.02 PROTECTIVE WALLCOVERING

- Koroseal "Traffic Patterns®" Decorative Wall Protection: Decorative high-impact semi-rigid vinyl sheet with polyvinyl fluoride film.
1. Fire Rating: Class A.
 2. Size: 48" (1.22m) x 96" (2.44m) Standard Sheet.
 3. Thickness: 0.030" (0.76mm) Standard; Custom thickness up to 0.060" (1.55mm) available.
 4. Pattern: Pattern to be selected by Architect from manufacturer's pattern selection.
 5. Texture: Mesa-S.

2.03 ADHESIVES

Furnish adhesives approved by Decorative Wall Protection manufacturer.

2.04 ACCESSORIES

- A. Accessory Moldings: Furnish accessory molding by Decorative Wall Protection manufacturer. Moldings shall be of a complementing solid color from manufacturer's standard selection.
- B. Caulk: Furnish colored caulk by Decorative Wall Protection manufacturer. Caulk shall be of a complementing solid color from manufacturer's standard selection.

PART 3 EXECUTION

3.01 EXAMINATION

Inspect wall surfaces to receive Decorative Wall Protection. Notify the Architect in writing if wall surfaces are not acceptable. Do not begin installation until unacceptable conditions have been corrected.

3.02 SURFACE PREPARATION

- A. Prepare walls in accordance with manufacturer's written instructions.
- B. Remove dust, dirt, grease, oil, loose paint, scale, and existing wallcovering.
- C. Resurface uneven wall surfaces and damaged walls.

3.03 INSTALLATION

- A. Install Decorative Wall Protection to walls in accordance with manufacturer's written instructions.
- B. Allow Decorative Wall Protection and adhesive to precondition for a minimum of 24 hours at a temperature between 65°F (18°C) and 85°F (29°C) before installation.
- C. Install sheets with texture running in the same direction for uniform appearance.

3.04 CLEANING

- A. Clean Decorative Wall Protection in accordance with manufacturer's instructions.
- B. Remove excess adhesive and layout marks.

KOROSEAL

Interior Products, LLC

800-628-0449 • www.korogard.com • Division 10 26 00

Korogard®, Koroseal®, Traffic Patterns®, and Vicrtex® are registered trademarks of Koroseal Interior Products, LLC